



East Herts
Community Safety Partnership

East Herts Strategic Assessment 2012-13

ABBREVIATED VERSION

Completed February 2012

Executive summary

This is an abbreviated version of the fifth strategic assessment compiled by East Herts Community Safety Partnership (CSP). The assessment aims to establish current and future crime, disorder and substance misuse issues within the district and make comparisons with other areas within the county, region and nationally, where appropriate. It is the evidence base for the 12 month Partnership action plan to run from April 2012 – March 2013. The full assessment is available on the East Herts Internet site (www.eastherts.gov.uk).

Recommendations

The analysis shows that East Herts has no overriding crime or disorder issue which will create challenges in how resources are employed. The continuing and increasing reduction in resources will have a significant influence in the coming year.

With no clearly identified problems to target, given the information available, reassurance and confidence should remain the focus. It is recommended that the Partnership continues with its single priority to 'Keep crime levels low and improve public confidence through reassurance and crime prevention measures.'

Section 1: Introduction

Methodology and data sources

This document has been produced through a risk assessment of countywide data. Where tabulated, 1st position demonstrates the lowest risk and 10th position the highest risk.

The Home Office data source 'iQuanta' produces figures for Community Safety Partnerships in 'most similar groups'. These are determined by considering regional geographic, demographic and socio-economic information to arrive at comparable partnerships. East Herts' group consists of fifteen partnerships; 1st position relates to the top performer of the group and 15th the opposite.

Local knowledge has also been considered in respect of risk levels.

Contextual information

Hertfordshire contains 10 district councils and East Herts is the largest covering approximately 184 square miles. According to the mid 2010 population estimate, the population of East Herts was estimated to be almost 138,500 people in 55,833 households, giving a population density of 2.92 persons per hectare.

Section 2: The analysis

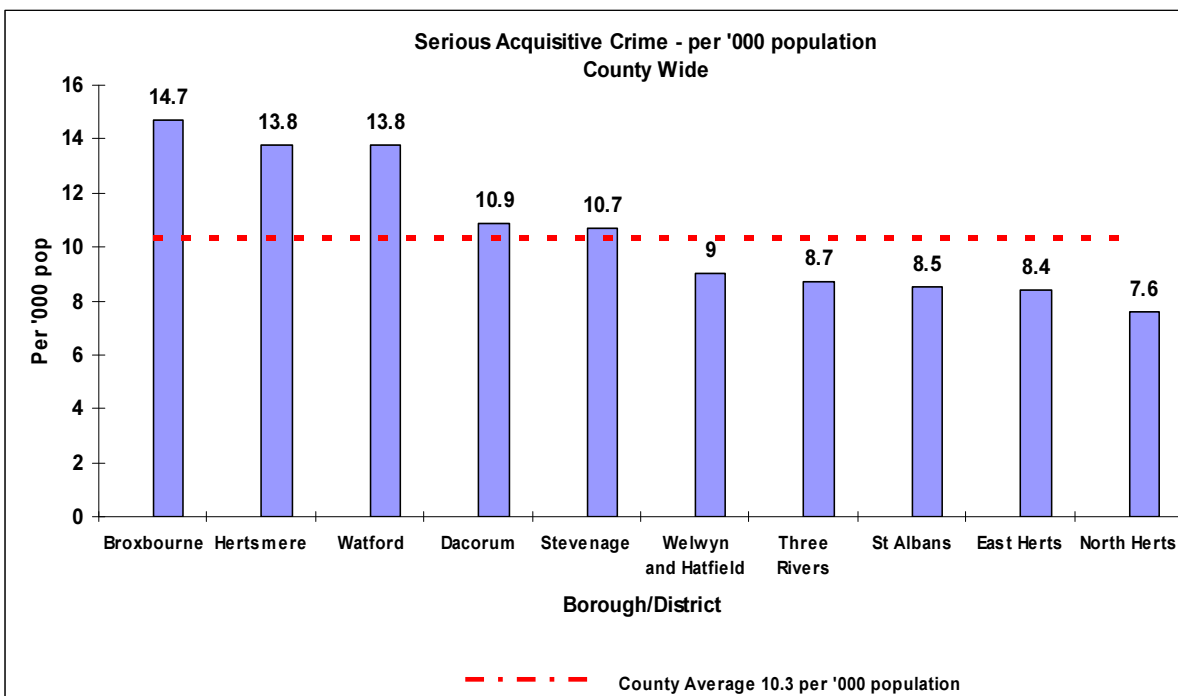
The analysis is divided into six themes; reducing crime, tackling drugs, alcohol misuse, tackling anti-social behaviour (ASB) and criminal damage, reducing reoffending and reassurance and confidence.

2.1 Reducing Crime

Serious Acquisitive Crime

Risk assessment status: Low Risk

Local knowledge status: Low Risk



iQuanta data shows that East Herts has fallen from 8th to 10th position when compared to the most similar group with 8.41 offences per 1000 residents and experiences a slightly above average numbers of serious acquisitive crime offences.

Serious acquisitive crime is broken down under the following crime types:

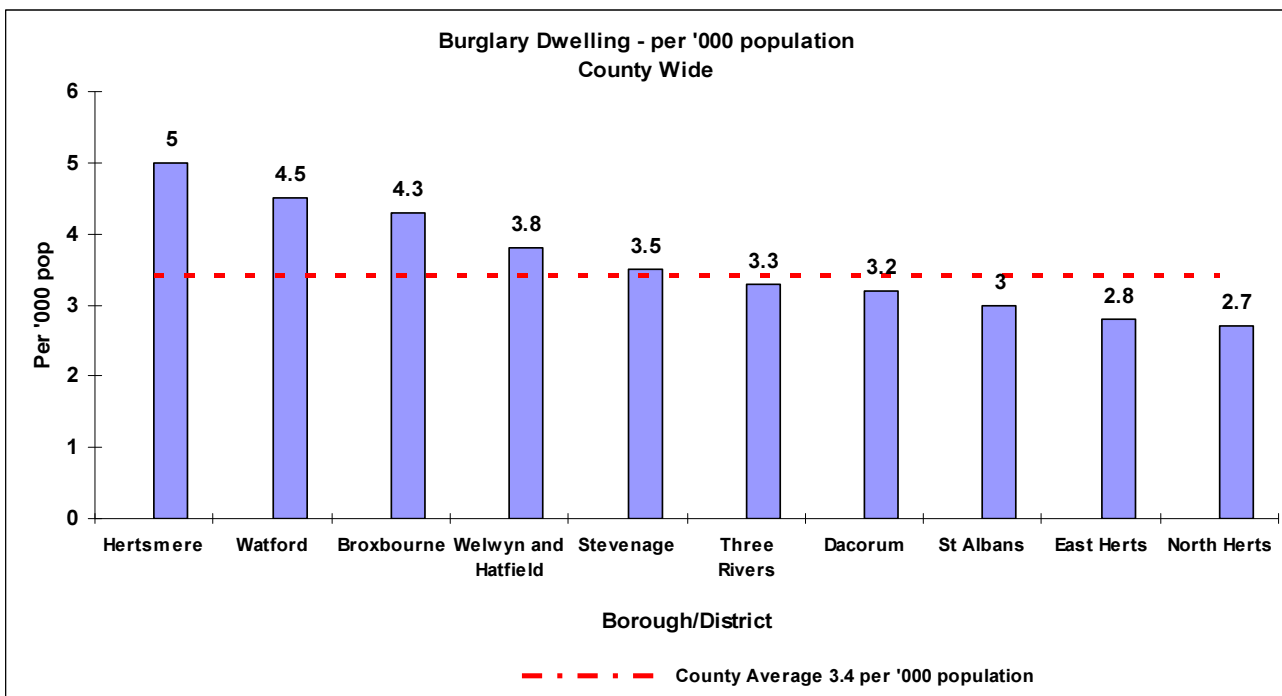
Crime type	1 August 2009 – 31 July 2010	1 August 2010 – 31 st July 2011	Change percentage and numerical value compared to same period last year
Serious Acquisitive Crime	1206	1164	-3.5% -42
• <i>Dwelling Burglary (including attempts)</i>	390	386	-1.1% -4
• <i>Vehicle Crime – Theft of Motor Vehicle</i>	160	173	+7.6% +13
• <i>Vehicle Crime – Theft from a Motor Vehicle</i>	632	569	-10.0% -68
• <i>Robbery</i>	24	36	+33.4% +12

There were 1164 serious acquisitive crime offences between 1st August 2010 and 31st July 2011, a reduction of 42 (3.5%) from last year. Together dwelling (or residential) burglary offences and vehicle crime accounted for 96.9% of all serious acquisitive crime offences.

Dwelling Burglary

Risk assessment status: Low Risk

Local knowledge status: Low Risk

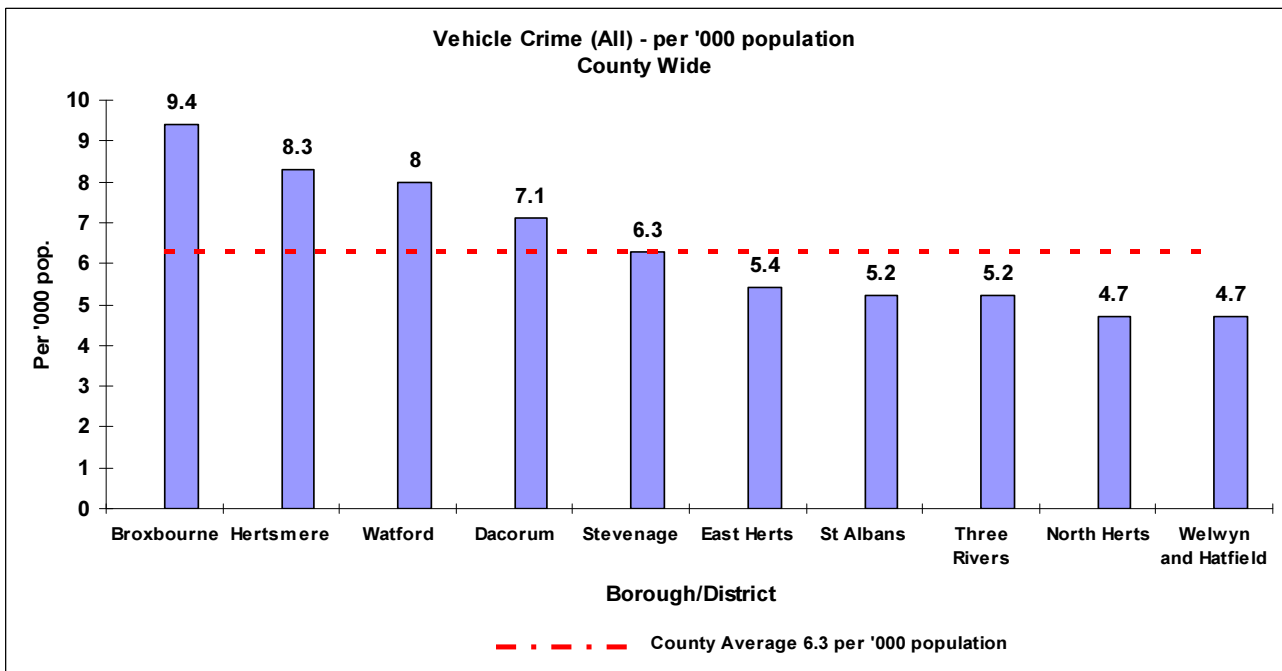


There were a total 386 dwelling burglary offences which included 62 attempts, 7 distraction and 3 aggravated. Distraction burglaries have reduced by 5, however, iQuanta data shows East Herts has fallen from 7th to 10th in the most similar group. No area had more than one distraction burglary during the period.

Vehicle Crime

Risk assessment status: Low Risk

Local knowledge status: Low Risk



There were 742 vehicle crimes reported in the 12 month period, a decrease of 6.4% from 792 in the previous year. For the three months to 31st July 2011, iQuanta shows East Herts in 11th position in the most similar group with 5.358 offences per 1000 residents.

Burglary Other

Risk assessment status: Medium Risk

Local knowledge status: Medium Risk

There were 519 burglary 'other' offences (including attempts) in East Herts over the 12 month period. This is an increase of 16.1% (n72) on the same period last year. East Herts is in 5th place in Hertfordshire with 3.74 offences per 1000 population.

iQuanta data shows East Herts in 8th position in the most similar group with 3.741 offences per 1000 population and therefore experiences a below average number of Burglary Other.

Theft from shop

Risk assessment status: Low risk

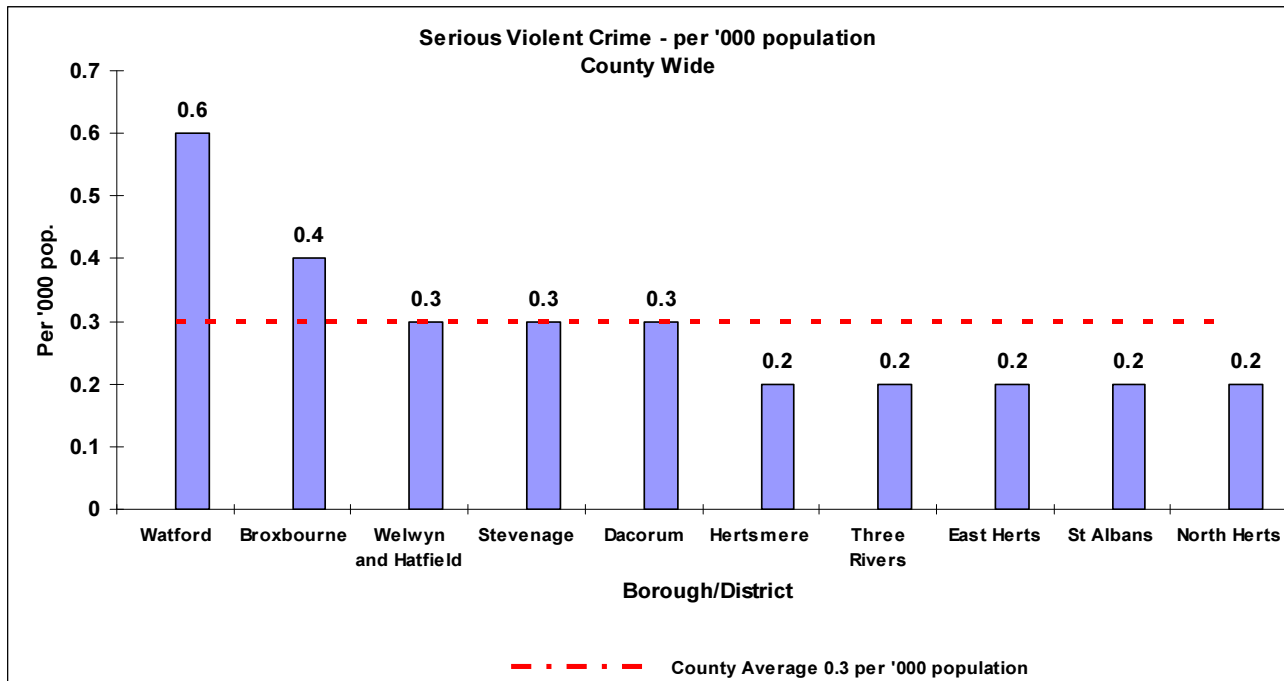
Local knowledge status: Medium Risk

Theft from a shop has increased by 5.6% (n30) compared with the same period the previous year. This positions East Herts as 3rd safest within Hertfordshire with 4.07 offences per 1000 head of population. iQuanta data places East Herts in 8th position in the most similar group, an average number of shoplifting offences.

Serious Violent Crime

Risk assessment status: Low risk

Local knowledge status: Low Risk



There were 26 reports of violent crime committed over the 12 month period, a reduction of 25.7% (n9) offences.

Domestic Violence

Risk assessment status: Low risk

Local knowledge status: Low Risk

There were 310 reports of domestic crime reported during this period which is an 8.3% (n28) decrease compared to the previous year. East Herts remains in 2nd position in the county for number of domestic violence cases recorded by the police - 2.23 offences per 1000 residents.

Reported incidents are on the increase overall, but this can likely be attributed to greater confidence of victims to report because of increased awareness and the structures in place.

Hate Crime

Local knowledge status: Low Risk

There were 44 reports of hate crime committed in the period. This is a decrease from 60 in the previous year. East Herts CSP is 1st in the county reporting just 0.317 offences per 1000 residents. Hate crime is not currently recorded on iQuanta.

Rogue trading

Local knowledge status: Medium risk

From 1st August 2010 to 31st July 2011, 12 incidents of rogue trading were recorded by Trading Standards; an increase of three compared to the previous year. These incidents include cold calling for house maintenance and driveway work. It should be noted that the data reflects recorded incidents

only. Anecdotal indications are that these offences may be more prevalent and further examination is needed to discover the full extent of the problem.

2.2 Tackling Drugs

Risk assessment status: Medium Risk

Local knowledge status: Medium Risk

Drug trafficking and drug trafficking other

These figures are a result of detections and therefore only show the number of offences identified by the police, as a result it should be noted that these figures cannot be used to measure the use of illegal drugs.

Offence type	No. of offences per 1000 head of population	Number of offences 2009/10	Number of offences 2010/11	% change	East Herts Rank
Drug Trafficking – Class A	0.108	65	15	-76.9	5 th out of 10
Drug Trafficking – Other	0.166	23	23	0.0	2 nd out of 10
Possession – Class A	0.931	112	129	+15.2	9 th out of 10
Possession – Other	2.534	371	351	-5.4	3 rd out of 10

There was a decrease in Trafficking Class A during the 12 month period. Possession Class A saw the largest increase in offence type, which put East Herts in 9th position in Hertfordshire. This is a result of the police carrying out operations, and can therefore be viewed as a positive.

Structured Treatment

From April 2012, Hertfordshire will have a comprehensive range of drug and alcohol treatment interventions, delivered through a number of locality-based hubs.

Number of clients in structured treatment – over 18

Risk Assessment status: Medium Risk

Local knowledge status: Medium Risk

Number of clients in structured treatment			
	East Herts	Hertfordshire	East Herts Rank
No. of clients in structured treatment	291	2421	8 th out of 10

East Herts features 8th in the county for the number of clients over 18 in structured treatment during the 12 month period 1st July 2010 to 30th June 2011.

Number of clients in treatment – under 18

Risk Assessment status: Medium Risk

Local knowledge status: Medium Risk

Number of under 18 clients in treatment			
	East Herts	Hertfordshire	East Herts Rank
No. of under 18 clients in treatment	48	201	10 th out of 10

East Herts features 10th in the county with 48 clients under the age of 18 in treatment between 1st August 2010 and 31st July 2011.

Drug paraphernalia finds

Between 1st August 2010 and 31st July 2011 there were 5 recorded finds of drug paraphernalia in the district - 3 in Hertford, 1 in Buntingford and 1 in Sawbridgeworth. This is a decrease of (16.7%) in recorded finds compared to the previous year.

Needle & Syringe Programme

Needle exchanges are available in four places across the district - two in Hertford, one in Ware and one in Bishop's Stortford.

2.3 Alcohol Misuse

Alcohol Related Crime

Risk assessment status: Low Risk

Local knowledge status: Low Risk

No. of offences per 1000 head of population			
	East Herts	Hertfordshire	East Herts Rank
Alcohol Related Crime	5.7	5.4	8 th out of 10

There was a 7.8% decrease in alcohol related offences during the period with 790 compared to 856 offences in the previous year. East Herts is currently placed 8th in the county for alcohol related crime, with an average of 5.7 offences per 1000 of the population.

During the 12 month period, 71.2% (n563) of alcohol related offences were deemed violent in nature compared to 69% (n591) the previous year.

Night Time Violent Crime

Risk assessment status: Medium risk

Local knowledge status: Medium Risk

No. of offences per 1000 head of population			
	East Herts	Hertfordshire	East Herts Rank
Night Time Violent Crime	4.83	4.43	8 th out of 10

There were 670 night time violent crime offences during the 12 month period, which is a 3.2% increase from the previous year (649 offences). East Herts CSP is currently ranked 8th in the county for night-time violent crime, reporting 4.83 crimes per 1000 population. This position has declined from 6th position in the previous year.

The number of licensed premises in East Herts remains unchanged at 573.

Underage sales

Trading Standards conducted 13 test purchases in East Herts between 1st August 2010 and 31st July 2011, which resulted in 4 failures - 2 in Buntingford and 1 each in Hertford and Bishop's Stortford.

Alcohol treatment

During the period of 1st August 2010 to 31st July 2011 there were 6 individuals under the age of 18 receiving treatment for alcohol abuse. This places the CSP in 9th position within the county. The CSP is in 5th place for the number of clients aged over 18 (n149) in alcohol treatment for the period 1st August 2010 – 31st July 2011.

2.4 Anti-Social Behaviour (ASB) and criminal damage

Police Recorded Anti-Social Behaviour

Risk assessment status: Low Risk

Local knowledge status: Low Risk

No. of incidents per 1000 head of population			
	East Herts	Hertfordshire	East Herts Rank

Police Recorded Anti-Social Behaviour	40.64	49.29	4th out of 10
--	-------	-------	---------------

There were 5629 incidents of anti-social behaviour (ASB) recorded by the police in East Herts. This is a 17.7% (n1209) decrease. East Herts is currently 4th in the county for anti-social behaviour. This is an average of 40.64 incidents per 1000 of the population.

Anti Social Behaviour Orders (ASBOs) and Acceptable Behaviour Contracts (ABCs)

Fourteen ABCs were signed during the period 1st August 2010 – 31st July 2011, with four individuals declining to sign. This is twelve fewer ABCs signed than the previous 12 month period, and 2 fewer refusals to sign. As of 31st July 2011 there were five current ASBOs, a reduction of two from the previous year. During 1st August 2010 – 31st July 2011 4 ASBOs expired and no ASBOs were obtained. To date, the Family Intervention Project (FIP) has worked with 143 individuals (34 families); currently 16 families are engaged.

School exclusions

There were 9 permanent school exclusions in East Herts during the academic year September 2010 to July 2011, placing East Herts in 10th position (down from 6th position last year). East Herts accounts for 30% of the total number of permanent pupil exclusions in the county.

East Herts had 300 pupils with an unauthorised absence of 5% or greater of possible sessions in the academic year September 2010 to July 2011. This places East Herts in 1st (best) position within Hertfordshire up from second last year.

Criminal Damage

Risk assessment status: Low Risk

Local knowledge status: Medium Risk

East Herts is currently 3rd best in the county for criminal damage. According to iQuanta, East Herts is in 6th position when compared to similar CSPs - 8.32 criminal damage offences per 1000 residents. Criminal damage offences have decreased from the previous year of 7.4%.

Deliberate Fire Calls

East Herts leads the county for reducing deliberate fire calls, reporting 1.1 per 1000 population. There were a total of 150 deliberate fire calls in East Herts between 1st August 2010 and 31st July 2011, compared with 229 the previous year (a decrease of 34.5%).

LiFE courses have been very successful with a total of 33 young persons completing the course.

Between April and December 2011, 274 Home Fire Safety checks were completed.

2.5 Managing Offenders

Integrated Offender Management

The adoption of Integrated Offender Management (IOM) included a full review of the Priority Prolific Offender Scheme (PPO); a new scoring matrix was designed to identify the top 200 offenders.

Prolific and Priority Offenders (PPO)

Number of Prolific and Priority offenders residing in CSP			
	East Herts	Hertfordshire	East Herts Rank
No. of PPOs	8	175	2 nd out of 10

At the end of quarter one (01/04/2011 to 30/06/2011) East Herts CSP had 8 PPOs adopted under the IOM scheme; currently, 2 are imprisoned and 1 is held on remand. The number of detected offences committed by the PPOs has decreased by 9 from 13 to 4. East Herts is ranked in 2nd position.

Youth Offending Team (YOT) Cases

Number of YOT cases			
	East Herts	Hertfordshire	East Herts Rank
No. of youth offences	164	2183	4 th out of 10
No of youth offenders	133	1223	7 th out of 10

The YOT reports 164 youth offences in the district placing East Herts 4th out of 10. For the number of youth offenders East Herts stands 7th out of 10 with 133 offenders.

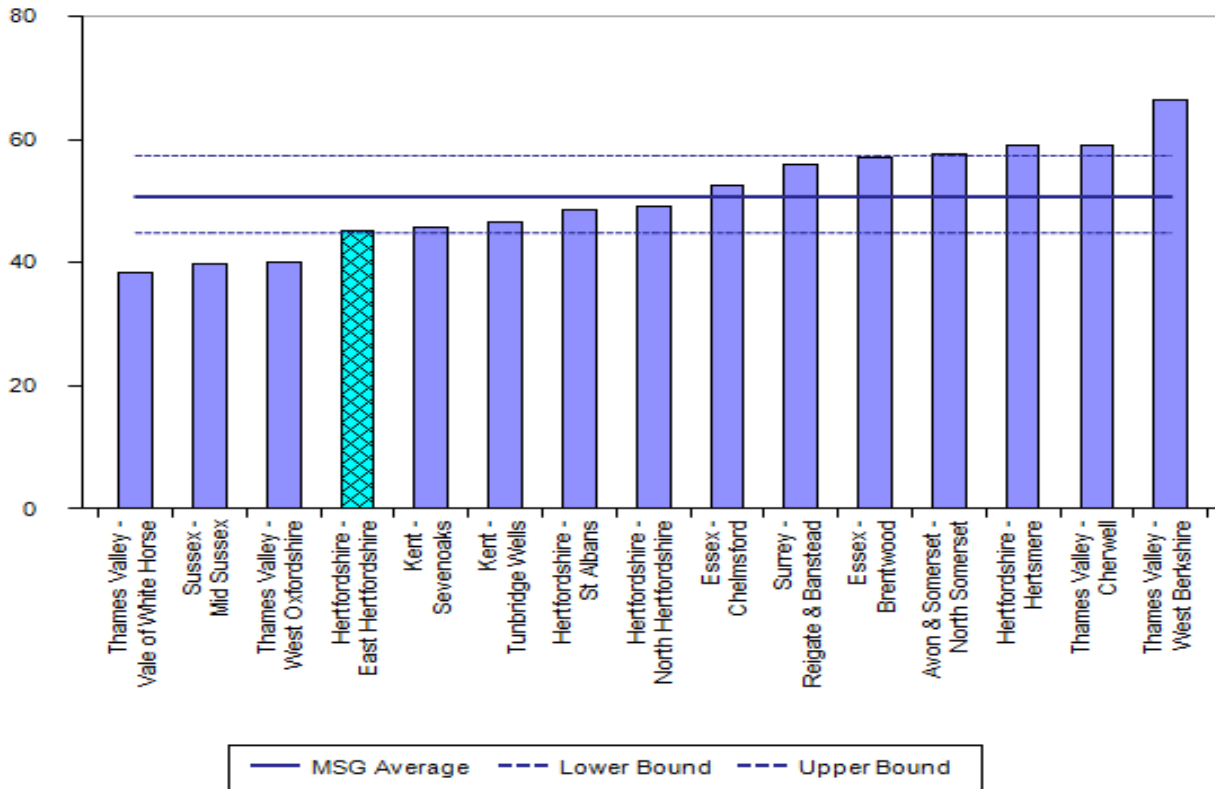
Number of clients taken onto probation caseload

Number of clients taken onto probation caseload			
	East Herts	Hertfordshire	East Herts Rank
No. clients on probation caseload	227	2514	3 rd out of 10

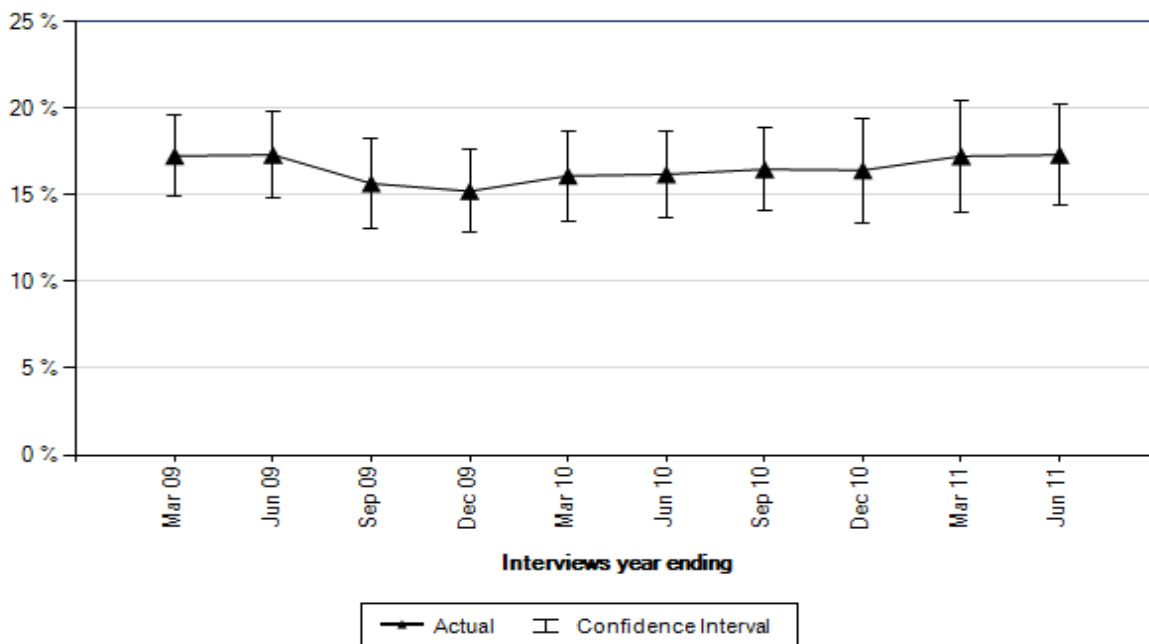
East Herts had 227 unique clients on the probation caseload during the 12 month period ending 31/07/11, placing it 3rd within the county. East Herts currently stands at 4th out of 10 for the number of unique clients taken on to the probation caseload with an unpaid work order.

2.6 Reassurance and Confidence

All Crime per 1000 Residents 1/12/2010 – 30/11/2011 (iQuanta Most Similar CSP)



Comparative Risk - Household Crime Hertfordshire March 2009 – Jun 2011 (BCS – iQuanta)



The two graphs indicate that overall, East Herts is a safe place.

Despite this, the public's perception about crime and ASB appears disproportionately high. This is likely to be exacerbated in the coming year by issues such as potential reductions in visible uniform presence, part-night street lighting and CCTV changes.

Section 3: Community Safety Consultation

Consultation has been completed as part of the Community Safety review through a 'Conversation Café' and survey forms distributed by Councillors. Consultation continues through contact with representative groups such as town councils, housing associations and NHW.

Section 4: Conclusion

In the report, differences between county and iQuanta results can be accounted for by the fact that one measure is between ten local districts and the other between fifteen regional CSPs. Crime and disorder levels across East Herts remain relatively low and overall, the district compares favourably within the county and with other CSPs. For example, whilst there were increases in dwelling burglaries in Sawbridgeworth and Ware Christchurch, these need to be viewed against significant decreases in three other areas. In the same way, whilst there has been an increase in robbery and night time violent crime offences, serious violent crime overall has reduced and there has been a decrease in ASB and criminal damage.

Decisions on local risk levels were reached after discussion with partners; there are concerns that theft from shop, criminal damage and rogue trading could increase. The current economic climate and reduction in resources will have a bearing in the coming year.

The one priority for 2011/2012 was to 'Keep crime levels low and improve public confidence through reassurance and crime prevention measures.' Given the information available, reassurance and confidence should remain the focus for the partnership.